

INVACARE® MATRX®
SEATING SERIES
 PRODUCT GUIDE



Invacare® Matrx® Seating and Positioning is an established global leader, committed to product innovation, high quality standards and superior product performance. As the world of seating evolves, the Invacare Matrx Seating Series continues to exceed customer expectations.

Call to order

1.800.668.5324
 invacare.ca

1.866.748.7943
 motionconcepts.com



matrx®
 SEATING SERIES

INVACARE® MATRIX®

TABLE OF CONTENTS

Pediatric

Cushions

PS Cushion	3
Kid*ab*ra Vi Cushion	3

Backs

Mini Back	3
-----------	---

Standard

Cushions

Libra™	4
Libra™ Fit Kit	4
Vi	4
Flovair™ Gentle/Max Contour	4
PS	4
PSVF	4
Stabilite™	4
Options	5
General Use	5

Backs

Elite™ TR	6
Elite™	6
Elite™ Deep	6
PB	6
PB Deep	6
Hardware	7
Options	7
Accessories	8/9
General Use	4

Bariatric

Cushions

Libra™ Heavy-Duty	10
Libra™ Fit Kit	10
Vi Heavy-Duty	10
Flovair™ Heavy-Duty Gentle/Max Contour	10
PS Heavy-Duty	10
Stabilite™ Heavy-Duty	10

Backs

Elite™ TR Heavy-Duty	11
Elite™ Heavy-Duty	11
Elite™ Deep Heavy-Duty	11
PB Heavy-Duty	11
PB Deep Heavy-Duty	11

High Performance

MX2 Back	13
----------	----

Accessories

Arm Pads/Straps/Lap Belts/Trays	13
---------------------------------	----

Quick Product Reference

Quick Product Reference	14/15
-------------------------	-------



INVACARE® MATRIX®

FABRIC OPTIONS

INVACARE® MATRX® BACKS & CUSHIONS



Mini Back

ADP Code: SE0001213

Width: 10", 11", 12", 13", 14"

Height: 7", 10", 12", 14"

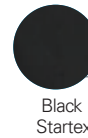
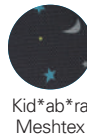
Weight Capacity: 150 lb.

Contour Depth: 3"

Fabric Options: Kid*ab*ra Meshtex (shown);
Blizzard Blue, Pink Lollipop and Black Startex

Standard Hardware: Mini-Set Mounting
Hardware (Quick release latch for easy removal/
portability; Fits 1", 7/8" and 3/4" diameter canes;
allows back angle/ depth adjustment with child
seated in wheelchair)

Options: Mini Swing-away Laterals, Chest
Harness Interface



Mini-Set Mounting Hardware



Mini Swing-away Laterals (Page 8)



Chest Harness Interface (Page 8)



PS Pediatric Cushion

ADP Code: SES1M0065

Width: 10" - 14"

Depth: *10", 12", 14," 16"

* available for 10" W cushions only

Weight Capacity: 150 lb.

Fabric Options: Kid*ab*ra Meshtex (shown);
Blizzard Blue, Pink Lollipop and Black Startex

Options: Custom Modifications,
Cushion Rigidizer, Pelvic Obliquity Kit



Kid*ab*ra Vi Cushion

ADP Code: SES1M0015

Width: 12", 14"

Depth: 12", 14"

Weight Capacity: 150 lb.

Cover Options: Kid*ab*ra Meshtex (shown), Black
Meshtex

Options: Custom Modifications, Drop Base,
Cushion Rigidizer, Pelvic Obliquity Kit



11" Elan Headrest

ADP Code: SEHND0015

Compact, lightweight and highly adjustable

Elan Headrest Hardware: Comes standard with
Fixed Mounting Hardware

Pads: Pediatric pad options available, Standard
Startex or Infection Control covers; aluminum plates
can be formed to shape

Adjustable Headrest Hardware:

Six points of adjustment through pivot ball and
multi-disk locking plates; includes tool-less
adjustment levers

2015 AWARD
HARDING
 INNOVATIVE
 PRODUCT
SMC15
 SEATING, MOBILITY AND MORE

INVACARE® MATRX® CUSHIONS



Libra™ Cushion

ADP Code: SES0001212

Width: 14", 15", 16", 17", 18", 19", 20"

Depth: *12", *14", 16", 18", 20", 22"

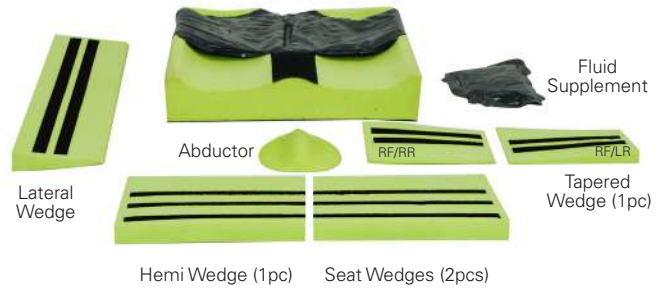
* available for 14" W cushions only

Weight Capacity: 300 lb.

Options: Custom Modifications, Drop Base, Cushion Rigidizer, Pelvic Obliquity Kit

Cover Options: Startex™ (shown), Spacer Mesh, Infection Control (wipeable)

Options: Fit Kit Accessories Custom options available through Motion Concepts



Fit Kit Accessories

ADP Code: SESND1040

Designed to enhance immersion, correct or accommodate orthopedic issues



Vi Cushion

ADP Code: SES1M0005/ SES1M00010

Width: 14", 16", 17", 18", 20"

Depth: *15", 16", *17", 18", 20"

* available for 14" W cushions only

Weight Capacity: 300 lb.

Options: Custom Modifications, Drop Base, Cushion Rigidizer, Pelvic Obliquity Kit

Options: Custom Modifications, Pelvic Obliquity Kit



Invacare® Flovair™ Gentle/Max Contour Cushion

ADP Code: SE0000967

Width: 15" - 20"

Depth: 15" - 20"

Weight Capacity: 300 lb.

Options: Custom Modifications, Cushion Rigidizer, Removable Leg Wedges, Pelvic Obliquity Kit

Available only from Invacare



PS Cushion

ADP Code: SES1M0066

Width: 16", 18", 20"

Depth: 16", 18", 20"

Weight Capacity: 300 lb.

Options: Custom Modifications, Cushion Rigidizer, Pelvic Obliquity Kit



PSVF Cushion

ADP Code: SES1M0070

Width: 16", 18", 20"

Depth: 16", 18", 20"

Weight Capacity: 300 lb.

Options: Custom Modifications, Cushion Rigidizer, Pelvic Obliquity Kit



Invacare® Stabilite™ Cushion

ADP Code: SE0000966

Width: 14" - 20"

Depth: 14" - 20"

Weight Capacity: 250 lb.

Options: Custom Modifications, Cushion Rigidizer, Removable Leg Wedges, Pelvic Obliquity Kit

Available only from Invacare

INVACARE® MATRX® OPTIONS



Cushion & Cover Modifications

Custom modifications are available to accommodate a variety of orthopedic conditions. Standard modifications include seat width and depth reductions, as well as leg length discrepancies. (Additional lead time required).

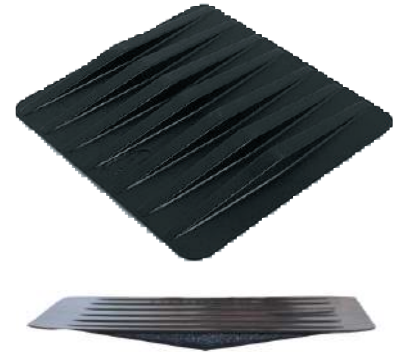


Pelvic Obliquity Kit (POK)

ADP Code: SESND1040

Designed to accommodate 0.5" or 1" obliquities. Can be readily modified and installed onto the following cushions:

Vi and Kid*ab*ra Vi Cushions; PS Cushions; Flovaiv Cushions; Stabilite Cushions



Cushion Rigidizers

ADP Code: SEICF192L

Lightweight plastic seat insert fits between seat rails for level support and eliminates hammock effect of sling seat upholstery. Securely fitted to bottom of foam cushion inside the cushion cover.

INVACARE® GENERAL USE



Invacare® Comfort-Mate Extra Cushion

ADP Code: SESNS0037

Width: 14" - 22"

Depth: 14" - 20"

Weight Capacity: 250 lb.

■ Available only from Invacare



Invacare® Single Density Cushion

ADP Code: SESNS0015

Standard Width: 10" - 24"

Standard Depth: 7" - 20"

Weight Capacity: 250 lb.

■ Available only from Invacare



Invacare® Absolute™ Cushion

ADP Code: SESNS0005

Standard Width: 16", 18", 20"

Standard Depth: 16", 18"

Weight Capacity: 250 lb.

■ Available only from Invacare

Standard

INVACARE® MATRX® BACKS



Elite™ TR Back

ADP Code: SE0001214

Width: 15", 16", 17", 18", 19", 20"

Height: 16", 18", 20"

Weight Capacity: 300 lb.

Contour Depth: 3"

Made with SuperSoft Foam: (Dual layer foam pad with 1" super-soft foam laminated to 1" firm HR foam)

Standard Hardware: Easy Set

Hardware Options: Extended Range Hardware, Split Hardware, Fixed Space Saver*, Heavy-Duty Easy Set



Elite™ Back

ADP Code: SEB1M0025

Width: 12" - 20"

Height: 10", 12", 14", 16", 18", 20"

Weight Capacity: 300 lb.

Contour Depth: 3"

Standard Hardware: Easy Set

Hardware Options: Extended Range Hardware, Split Hardware, Fixed Space Saver*, Heavy-Duty Easy Set



Elite™ Deep Back

ADP Code: SEB1M0026

Width: 14" - 20"

Height: 10", 12", 14", 16", 18", 20"

Weight Capacity: 300 lb.

Contour Depth: 6"

Standard Hardware: Easy Set

Hardware Options: Extended Range Hardware, Split Hardware, Fixed Space Saver*, Heavy-Duty Easy Set



PB Back

ADP Code: SEB1M0005

Width: 14", 16", 17", 18", 20"

Height: 12", 16", 20"

Weight Capacity: 300 lb.

Contour Depth: 5"

Standard Hardware: Easy Set

Hardware Options: Extended Range Hardware, Split Hardware, Fixed Space Saver*, Heavy-Duty Easy Set



PB Deep Back

ADP Code: SEB1M0015

Width: 14", 16", 17", 18", 20"

Height: 12", 16", 20"

Weight Capacity: 300 lb.

Contour Depth: 7"

Standard Hardware: Easy Set

Hardware Options: Extended Range Hardware, Split Hardware, Fixed Space Saver*, Heavy-Duty Easy Set

INVACARE® MATRIX® HARDWARE



Mounting Hardware Options

Easy Set (PBMH)

300 lb. weight capacity. Quick release design for easy removal/portability; Allows back angle/depth adjustment with client seated in wheelchair; Compatible with all models of Elite & PB backs.

Split (SMH)

500 lb. weight capacity. Allows clearance of back cane rigidizer bars or other obstacles.

Heavy-Duty Easy Set (HDMH)

500 lb. weight capacity. Included with all Heavy-Duty Back models; Recommended for users with high tone or heavy intended use.

Fixed Space Saver (FSSH)

500 lb. weight capacity. Recommended for power tilt/recline or tighter width applications. Permanent mount requires tool for removal.

Mounting Pins

Standard/Long Mounting Pins: Included with PB and Elite Backs; allows PB Back to fit 1" narrower to 1" wider and Elite backs the same width or 1" wider wheelchairs.

Optional Extended Mounting Pins (EMP): Allow interface to wheelchairs up to 2" wider. 300 lb. weight capacity maximum.

INVACARE® MATRIX® OPTIONS



Super-soft Foam Upgrade

ADP Code: SEBND0020

Provides a 1" layer of super-soft foam laminated onto a 1" layer of firmer high resilience foam for increased immersion and added comfort. Available for the following models/sizes:

Invacare Matrix Elite & Elite Deep Backs

Width: 16", 18", 20"

Height: 16", 18", 20"



Visco Foam Upgrade

ADP Code: SEBND0020

Provides a ¾" layer of visco foam laminated onto a 1" layer of high resilience foam. for increased immersion and added comfort.

Visco upgrade is available on all Invacare Matrix PB back models.(Note: option not available with molded foam)



Waterproof Fabric

Wipeable Slip Cover

ADP Code: SEMCF102L

Additional cover adds a layer of protection for the back cover and foam. Easily removed for cleaning and ideal for incontinent users and institutions. Available for the following models/sizes: Invacare Matrix Elite & Elite Deep Backs

Width: 16", 18", 20"

Height: 16", 18", 20"

Standard

INVACARE® MATRX® BACK ACCESSORIES



Fixed Laterals

ADP Code: SELND0005

Designed for Invacare Matrix Elite & Elite Heavy-Duty Backs.

Mounting: Installs inside back shell;

Does not compromise depth/angle adjustment

Options: Standard/ Pediatric/Offset (Left or Right)

Sizes:

- Standard 7.5" L x 5" H
- Pediatric 5.5" L x 3" H



Swing Away Laterals

ADP Code: SELND0010

Designed for Invacare Matrix Elite and Elite Heavy-Duty Backs. Mounting: Installs inside back shell; Does not compromise depth/angle adjustment. Lock/release latch allows pad to swing away for side transfers.

Options: Standard or Offset (Left or Right)

Pad Sizes:

- 4.25" L x 3.25" H
- 5.25" L x 3.5" H
- 5.75" L x 3.75" H
- 6.5" L x 4.25" H

Pediatric



Mini Swing-Away Laterals

ADP Code: SELND0010

Designed for the Invacare Matrix Mini Back. Installs inside back shell; Does not compromise depth/angle adjustment. Lock/release latch allows pad to swing away for side transfers.

Options: Standard only

Pad Size: 4.25" L x 3.25" H



Chest Harness Interface for Mini Backs (HIMINI)

Height adjustable hardware allows attachment of OEM-compliant abdominal supports to the full range of Mini backs.



Chest Harness Interface for Elite Backs (CHIEB)

Width, height and angle adjustable chest harness interface for precise orientation of shoulder straps.



Chest Harness Interface for PB Backs (CHIPB)

Width adjustable chest harness interface for precise orientation of shoulder straps.



Privacy Flaps (PFLAP)

Available for all models of Invacare Matrix PB, Elite shown), and the MX2 backs.

Standard Sizes: XS up to XXL, (fit back widths 13" up to 24")

Note: Flaps over 24" wide are available as special order.



INVACARE® MATRIX® ELAN® HEADREST



Elan Headrest Hardware

ADP Code: SEHND0015

Compact, lightweight and highly adjustable

Elan Headrest Hardware: Comes standard with Fixed Mounting Hardware

Pads: 6 Pad options available; aluminum plates can be formed to shape

Adjustable Headrest Hardware:

Six points of adjustment through pivot ball and multi-disk locking plates, available in standard - 15" post or mini - 11" post; includes tool-less adjustment levers



Co-molded Foam



Tool-less Adjustment levers



Fixed Mounting Hardware



Standard Pad

ADP Code: SE0001320/
(Infection Control) SE0001321

Pad Sizes:

- 6" Pad: 6" x 3.5"
- 10" Pad: 10" x 5"
- 14" Pad: 14" x 5"

Elan Headrest Pad Covers:

Standard Startex or Infection Control covers available



Occipital Pad

ADP Code: SE0001322/
(Infection Control) SE0001323

Pad Sizes:

- 9" Pad: 9" x 7"
- 12" Pad: 12" x 8"

Elan Headrest Pad Covers:

Standard Startex or Infection Control covers available



4 Point Pad

ADP Code: SE0001324/
(Infection Control) SE0001325

Pad Size: 11" x 10"

Elan Headrest Pad Covers:

Standard Startex or Infection Control covers available

Accessories

2015 AWARD
HARDING
 INNOVATIVE
 PRODUCT
SMC15
 SEATING, MOBILITY AND MORE

INVACARE® MATRX®

HEAVY-DUTY CUSHIONS



Libra™ Heavy-Duty Cushion

ADP Code: SES0001237

Width: 21", 22", 23", 24"

Depth: 18", 20", 22"

Weight Capacity: 500 lb.

Cover Options: Startex™ (shown), Spacer Mesh, Infection Control (wipeable)

Options: Fit Kit Accessories Custom options available through Motion Concepts



Fit Kit Accessories

ADP Code: SESND1040

Designed to enhance immersion, correct or accommodate orthopedic issues



Vi Heavy-Duty Cushion

ADP Code: SES1M0011

Width: 21" - 30"

Depth: 21" - 26"

Weight Capacity: 600 lb.

Options: Custom Modifications, Pelvic Obliquity Kit



Invacare® Flovair™ Heavy-Duty Gentle/Max Contour Cushion

ADP Code: SESND1060

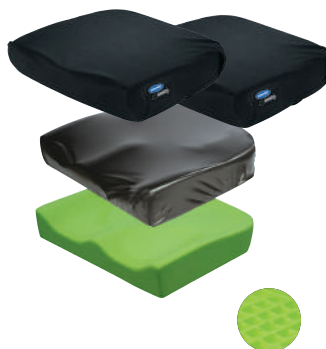
Width: 21" - 24"

Depth: 16" - 22"

Weight Capacity: 500 lb.

Options: Custom Modifications, Cushion Rigidizer, Removable Leg Wedges, Pelvic Obliquity Kit

■ Available only from Invacare



PS Heavy-Duty

ADP Code: SES1M0066

Width: 21" - 30"

Depth: 18" - 30"

Weight Capacity: 600 lb.

Options: Custom Modifications, Pelvic Obliquity Kit, Cushion Rigidizer



Invacare® Stabilite™ Heavy-Duty Cushion

ADP Code: SESND1060

Width: 21" - 24"

Depth: 16" - 22"

Weight Capacity: 350 lb.

Options: Custom Modifications, Cushion Rigidizer, Removable Leg Wedges, Pelvic Obliquity Kit

■ Available only from Invacare

INVACARE® MATRX® HEAVY-DUTY BACKS

Bariatric



Elite™ TR Heavy-Duty Back

ADP Code: SE0001214

Width: 21" - 24"

Height: 20"

Weight Capacity: 500 lb.

Contour Depth: 3"

Made with SuperSoft Foam: (Dual density, 1" firm + 1" soft HR foam combination)

Standard Hardware: Heavy-Duty Easy Set

Hardware Options: Fixed Space Saver*



Heavy-Duty Easy Set Hardware



Super Soft Foam



Elite™ Heavy-Duty Back

ADP Code: SE0001051

Width: 21" - 24"

Height: 16", 20"

Weight Capacity: 500 lb.

Extra Wide PB Heavy-Duty Backs are available up to 30" W x 16" or 20" H

Contour Depth: 5"

Standard Hardware: Heavy-Duty Easy Set

Hardware Options: Fixed Space Saver*



Elite™ Deep Heavy-Duty Back

ADP Code: SEB1M0020

Width: 21" - 24"

Height: 16", 18", 20"

Weight Capacity: 500 lb.

Contour Depth: 6"

Standard Hardware: Heavy-Duty Easy Set

Hardware Options: Fixed Space Saver*



PB Heavy-Duty Back

ADP Code: SEB1M0010

Width: 20", 22", 24"

Height: 16", 20"

Weight Capacity: 500 lb.

Extra Wide PB Heavy-Duty Backs are Available up to 30" W x 16" or 20" H

Contour Depth: 5"

Standard Hardware: Heavy-Duty Easy Set

Hardware Options: Fixed Space Saver*



PB Deep Heavy-Duty Back

ADP Code: SEB1M0020

Width: 20", 22", 24"

Height: 16", 20"

Weight Capacity: 500 lb.

Extra Wide PB Deep Heavy-Duty Backs are available up to 30" W x 16" or 20" H

Contour Depth: 7"

Standard Hardware: Heavy-Duty Easy Set

Hardware Options: Fixed Space Saver*

*Note: This back can be installed on the Invacare® Formula™ CG Tilt/Recline, and Motion Concepts TRx Power Positioning Systems using FSSH

2017 AWARD
HARDING
INNOVATIVE
PRODUCT
GMC17
SEATING, MOBILITY AND MORE



INVACARE® MATRX® MX2 BACK



Matrx MX2 Back

ADP Code: Pending

MX2 Back is designed for active users who demand the best. Carbon fiber specially engineered to provide unmatched stability for peak performance. Contoured to provide hip/trunk stability and enhance upper extremity mobility and function. Very light weight and aesthetically appealing.

Width: 14", 15", 16", 17", 18"

Height: 6", 9", 12", 16"

Weight Capacity: 250 lb.

Contour Depth: 3"

Hardware Options: Fixed Mount & Quick Release



Back Shell

Solid Carbon fiber construction designed to provide optimal flex and suspension. Shaped for perfect fit and maximum stability. Designed with cutouts for breathability and slotes for easy height adjustmen.



Quick Release



Fixed Mount

Hardware Options

Angle, height, depth, width, rotation adjustable for precise orientation.

Fixed Mount – Lightweight, carbon fiber construction, maximum performance for rigid chairs

Quick Release – Easy removal for portability



Privacy Flaps (PFLAP)

Available for all MX2 back sizes

INVACARE® MATRX® ACCESSORIES



Air Mesh Calf Straps

Available in 4 sizes:
 3.5" H and fits chairs 15" - 18" W
 3.5" H and fits chairs 18" - 22" W
 9" H and fits chairs 15" - 18" W
 9" H and fits chairs 18" - 22" W



Padded Lap Belts

Available in 2 and 4 Point; Central pull, push release bottom; fits hip widths 13" - 19" W



Multi-Position Arm Pad

Available for left or right side and in 2 sizes:
 Full length: 14" x 3"
 Desk length: 10" x 3"



Modular Arm Pads

Durable composite frame features 3 slots for infinite fore and aft adjustability as well as offset mounting.

Available for left or right side and in 2 sizes:

Full length: 14" x 4"
 Desk length: 10" x 4"

Available in 2 interchangeable foam inserts:
 Visco Foam/Startex and Integral Foam



Gel Arm Pads

Available for left or right side and in 3 sizes:

Narrow: 12" x 2"
 Wide: 12" x 3"
 Long: 14" x 3.5"



Ergonomic Arm Trough

Molded, ergonomic shape fits the natural arm curve; provides users flexibility of various arm positions Available for left or right side and is 13" x 4.5"; hand pad is optional add-on and is also available for left or right side and is 5" x 4.5"



Invacare® Drop Base

Provides stable support base for the cushion. Three sizes fit wheelchairs from 14" - 22" W

■ Available only from Invacare



Multi-Axis Armrest Mount

Allows infinite adjustability of angle and rotation of arm pad or Multi-position arm pads or Arm Trough.

Accessories

Cushions	Absolute	Single Density	Comfort-Mate Extra	Stabilite	Stabilite Heavy-Duty	PS Pediatric	PS Cushion	PS Heavy-Duty
	STANDARD	STANDARD	STANDARD	STANDARD	BARIATRIC	PEDIATRIC	STANDARD	BARIATRIC
Model	ECwd	SDwd	CMEwd	ITSGwd	ITSGwd	PSwwdd	PSwwdd	PSwwdd
Width	16", 18", 20"	10" - 24"	14" - 22"	14" - 20"	21" - 24"	10" - 14"	16", 18", 20"	21" - 30"
Depth	16", 18"	7" - 20"	14" - 20"	14" - 22"	16" - 22"	10", 12", 14", 16"	16", 18", 20"	18" - 30"
Weight Capacity	250 lb.	250 lb.	250 lb.	250 lb.	350 lb.	150 lb.	300 lb.	600 lb.
Std. Cover	Meshtex	Meshtex	Meshtex	Meshtex	Meshtex	Startex (Reversible)	Startex (Reversible)	Startex (Reversible)
Cover Options						Kid*a*bra, Pink Lollipop, Blizzard Blue		
ADP Codes	SESNS000	SESNS0015	SESNS0037	SE0000966	SESND1060	SES1M0065	SES1M006	SES1M0066
Available from	INVACARE	INVACARE	INVACARE	INVACARE	INVACARE	INVACARE	INVACARE	INVACARE
						MOTION CONCEPTS	MOTION CONCEPTS	MOTION CONCEPTS

Backs	Mini	Elite	Elite Heavy-Duty	Elite TR	Elite TR Heavy-Duty	Elite Deep	Elite Deep Heavy-Duty	PB
	PEDIATRIC	STANDARD	BARIATRIC	STANDARD	BARIATRIC	STANDARD	BARIATRIC	STANDARD
Model	MINIwwhh	PBEwwhh	PBEwwhh-HD	PBEwwhh-TR	PBEwwhh-TRHD	EDBwwhh	EDBwwhh-HD	MPBwwhh
Width	10" - 14"	12" - 20"	21" - 24" ; 25" - 30" (Extra Wide)	15" - 20"	21" - 24"	14" - 20"	21" - 24"	14", 16", 17", 18", 20"
Height	7", 10", 12", 14"	10", 12", 14" 16", 18", 20"	16", 20"	16", 18", 20"	20"	10", 12", 14" 16", 18", 20"	16", 18", 20"	12", 16", 20"
Contour Depth	3"	3"	3"	3"	3"	6"	6"	5"
Weight Capacity	150 lb.	300 lb.	500 lb.	300 lb.	500 lb.	300 lb.	500 lb.	300 lb.
Std. Cover	Kid*a*bra	Meshtex	Meshtex	Meshtex	Meshtex	Meshtex	Meshtex	Meshtex
Cover Options	Pink Lollipop, Blizzard Blue	Slip Cover (wipeable)**		Slip Cover (wipeable)**		Slip Cover (wipeable)**		
Fits onto Back Canes:	Fits up to 1" wider	Fits up to 1" wider	Fits up to 1" wider	Fits up to 1" wider	Fits up to 1" wider	Fits up to 1" wider	Fits up to 1" wider	Fits 1" narrower up to 1" wider
ADP Codes	SE0001213	SEB1M0025	SE0001051	SE0001214	Pending	SEB1M002	SEB1M002	SEB1M0005
Available from	INVACARE	INVACARE	INVACARE	INVACARE	INVACARE	INVACARE	INVACARE	INVACARE

PSVF Cushion	Flovair Gentle/ Max Contour	Flovair Heavy-Duty Gentle/Max Contour	Kid*ab*ra-Vi	Vi	Vi Heavy-Duty	Libra	Libra Heavy-Duty
STANDARD	STANDARD	BARIATRIC	PEDIATRIC	STANDARD	BARIATRIC	STANDARD	BARIATRIC
PSVFwwdd	ITFGwd /ITFMwd	ITFGwd /ITFMwd	KAwddd-Vi	MAwddd-Vi	MAwddd-Vi	LCwwdd	LCwwdd
16", 18", 20"	15" - 20"	21" - 24"	12", 14"	14", 16", 18", 20"	21" - 30"	14" - 20"	21", 22", 23", 24"
16", 18", 20"	15" - 20"	16" - 22"	12", 14"	16", 18", 20"	18" - 30"	12", 14", 16", 18", 20", 22"	18", 20", 22"
300 lb.	300 lb.	500 lb.	150 lb.	300 lb.	600 lb	300 lb.	500 lb.
Startex (Reversible)	Meshtex	Meshtex	Kid*a*bra	Meshtex	Meshtex	Startex	Startex
			Meshtex			Spacetex (-SP), Infection Control (-IC)*	Spacetex (-SP), Infection Control (-IC)*
SES1M0070	SE0000967	SESND1060	SES1M0015	SES1M000	SES1M0011	SES0001212	SES0001237
INVACARE			INVACARE	INVACARE	INVACARE	INVACARE	INVACARE
MOTION CONCEPTS	INVACARE	INVACARE	MOTION CONCEPTS	MOTION CONCEPTS	MOTION CONCEPTS	MOTION CONCEPTS	MOTION CONCEPTS

*Additional surcharges apply. Please contact Invacare Canada or Motion Concepts for details

PB Heavy-Duty	PB Deep	PB Deep Heavy-Duty	MX2 Fixed	MX2 Quick Release
BARIATRIC	STANDARD	BARIATRIC	STANDARD	STANDARD
HDBwwhh	PBDwwhh	DHDwwhh	IMX2wwhh-SL	IMX2wwhh-RM
20" - 30" †	14", 16", 17", 18", 20"	20" - 30" †	14" - 18"	14" - 18"
16", 20"	12", 16", 20"	16", 20"	6", 9", 12", 16"	6", 9", 12", 16"
5"	7"	7"	3"	3"
500 lb.	300 lb.	500 lb.	250 lb.	250 lb.
Meshtex	Meshtex	Meshtex	Spacetex / Onyx Vinyl	Spacetex / Onyx Vinyl
			n/a	n/a
Fits up to 1" wider	Fits 1" narrower up to 1" wider	Fits up to 1" wider	Fits 1" narrower up to 1" wider	Fits 1" narrower up to 1" wider
SEB1M001	SEB1M0015	SEB1M0020	Pending	Pending
INVACARE	INVACARE	INVACARE	INVACARE	INVACARE
MOTION CONCEPTS	MOTION CONCEPTS	MOTION CONCEPTS	MOTION CONCEPTS	MOTION CONCEPTS

** Slip Covers available for specific back sizes. Additional surcharges apply. Please contact Invacare Canada or Motion Concepts for details.
†(21", 23", 25"-30") back widths are available as special order only. Please contact Invacare Canada or Motion Concepts for details.

Invacare Corporation

www.invacare.com

USA

One Invacare Way
Elyria, Ohio
44035-4190
(800) 333-6900

Canada

570 Matheson Blvd. E.
Unit 8
Mississauga, Ontario
L4Z 4G4 Canada
(800) 668-5324

Motion Concepts

www.motionconcepts.com
info@motionconcepts.com

USA

700 Ensminger Rd., Suite 112
Tonawanda, NY 14150
(888) 433-6818
Fax: (888) 433-6834

Canada

84 Citation Dr., Unit 1-7
Concord, ON L4K 3C1
(866) 748-7943
(905)-695-0134
Fax: 905-695-0138

© 2016

Invacare Corporation.
All rights reserved.
Trademarks are identified
by the symbols ™ and
©. All trademarks are
owned by or licensed to
Invacare Corporation unless
otherwise noted. Matrix
is a registered trademark
of Motion Concepts.
Specifications are subject
to change without
notification.
Form No. 17-355C
Rev. 07/18
160955

*This information is not intended to be, nor should it be considered billing or legal advice. Providers are responsible for determining the appropriate billing codes when submitting claims to ADP and should consult an attorney or other advisor to discuss specific situations in further detail.

