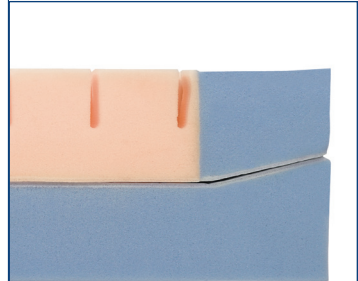
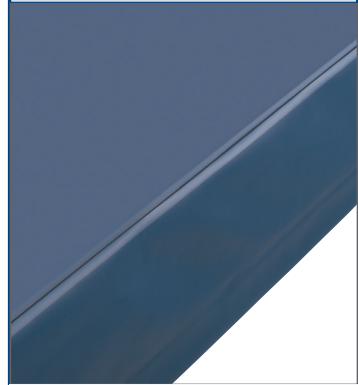
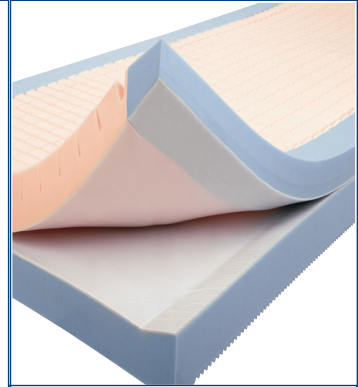


INVACARE®  
**GLISSANDO**  
GLIDING MATTRESS



The **Glissando Gliding Mattress** is designed to prevent friction and shear, which can contribute to pressure ulcer development, while providing comfort for the resident. The patented design allows the mattress to conform simultaneously to the resident and the bed frame, optimizing the features of an articulating bed.

## Invacare Glissando Gliding Mattress

When the bed is articulated, the top surface retains its properties for effectively supporting the resident, while the base of the mattress separately conforms to the bed frame.

This unique design reduces unwanted resident movement, reducing potential for tissue damage resulting from friction and shearing.

## Features

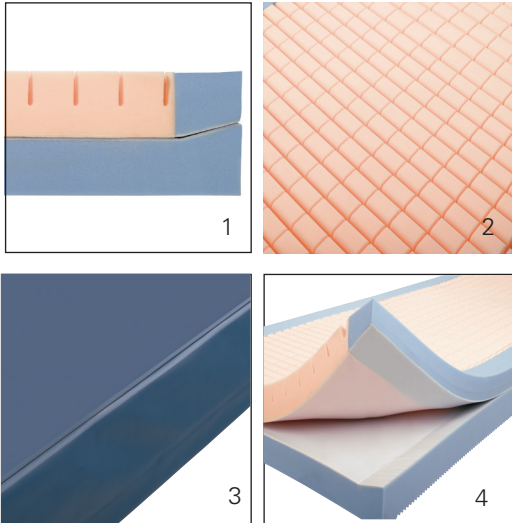
Water-resistant 2-way stretch polyurethane cover with welded seams

Two layers of high-density foam with a patented gliding layer

Laser-cut castellations break the surface tension of the foam allowing for maximized body contact, minimal shear, increased airflow and optimized pressure reduction

Built in side supports

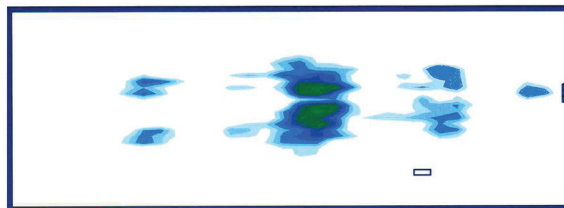
## TDXSP-LE Features



1. Built-In Support - Provides effective sidewall support, facilitating resident transfer.
2. Castellations - Break surface tension of foam allowing maximized body contact, optimizing pressure reduction.
3. Premium Cover - Water resistant cover with welded seams and flap concealing the zipper to help prevent contamination of the foam.
4. Dual Layers of High Density Foam - Two-part construction with a patented "gliding" layer enable top and bottom sections to move independently as mattress is articulated.



## Invacare® Glissando® gliding mattress Body Interface Pressure Imaging Test



Test demonstrates contact measurement between key pressure points. Subject: Female, 5'5½", 135 lbs.

## Specifications

Sizes :

SRS2080: 36" x 80" (also available with Raised Side Rails)

- Weight Capacity: 500 lbs. (550 lbs. on 42" width models)
- Cover: Two-way stretch waterproof polyurethane
- Built-in side supports
- Limited Warranty: 8 years on Mattress, 4 years on Cover

## Invacare Canada LP

[www.invacare.ca](http://www.invacare.ca)

570 Matheson Blvd. E.,  
Unit 8  
Mississauga, Ontario  
L4Z 4G4, Canada  
(800) 668-5324

©2017

Invacare Corporation.

All rights reserved.

Trademarks are identified by the symbols <sup>TM</sup> and <sup>®</sup>.

All trademarks are owned by or licensed to Invacare Corporation unless otherwise noted.

Specifications are subject to change without

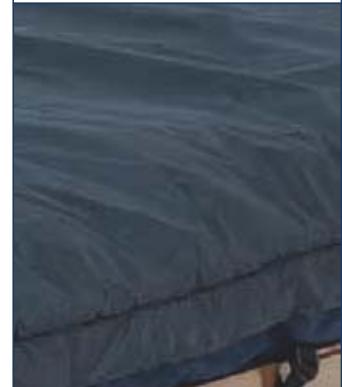
notice.

Form No. 11-840C

Rev. 01/17



INVACARE®  
**microAIR® MA50**  
SERIES THERAPEUTIC SUPPORT SURFACES



The **Invacare® microAIR® MA50 Therapeutic Support Surface** overlay is a full-featured alternating pressure overlay with four alternating pressure cycles to provide relief and comfort.

The **Invacare® microAIR® MA51 Therapeutic Support Surface** model is an alternating pressure mattress replacement system which helps reduce interface pressure to aid in the prevention and treatment of Stage I to IV pressure ulcers.

In addition to all of the features of the microAIR MA51 mattress, the **Invacare® microAIR® MA55 Therapeutic Support Surface** model improves air circulation and cools the body temperature with a unique system of low air loss released into the mattress.

**Features**

**State of the art compressor** – With solenoid valve system allows for easy set up and effective therapy cycles

Four therapy times – Can be adjusted for patient comfort to provide pressure relief

**Constant pressure monitoring** – Constantly monitors the air pressure in the mattress to maintain the appropriate pressure to prevent capillary occlusion (generally below 32mm/Hg)

**Manual Fowler** – When activated manually, 25% more air is automatically pushed into the mattress to prevent patient from bottoming out when bed is articulated

**Audio and visual alarms** – Warns the patient and caregiver during power outage or low pressure

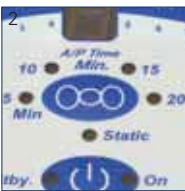
**Lock out button** – prevents against tampering or accidental adjustments

**Quick connect coupler** – allows for quick and easy set up

**Power outage safety** – Mattress remains inflated during power outage as long as air hose is connected to the compressor

**Pressure adjustment** – Pressure can be adjusted by 25%, 50% or 75% to provide comfort for frail patients

**HCPCS Code: E0372(MA50), E0277(MA51/MA55)**



- 1. Easy to replace cells in case of damage
- 2. Choice of four therapy cycles
- 3. Dual layer quilted cover, denier nylon bottom



**Invacare Corporation**  
www.invacare.com

**USA**  
One Invacare Way  
Elyria, Ohio  
44035-4190  
(800) 333-6900

**Canada**  
570 Matheson Blvd. E.,  
Unit 8  
Mississauga, Ontario  
L4Z 4G4 Canada  
(800) 668-5324

©2012  
Invacare Corporation.  
All rights reserved.  
Trademarks are identified by the symbols ™ and ®. All trademarks are owned by or licensed to Invacare Corporation unless otherwise noted. Specifications are subject to change without notification.  
Form No. 10-125  
Rev. 03/12  
111232



Model #	Dimensions	Weight Capacity	Compressor	Alternating Time Cycle	Alarms	Limited Warranty
MA50	80" L 36" W 6" H	350 lb.	10 LPM	Adjustable	Audio and Visual	1 Year (Cover/Mattress) 2 Years (Power Unit)
MA51	80" L 36" W 8" H	350 lb.	10 LPM	Adjustable	Audio and Visual	1 Year (Cover/Mattress) 2 Years (Power Unit)
MA55	80" L 36" W 8" H	350 lb.	10 LPM	Adjustable	Audio and Visual	1 Year (Cover/Mattress) 2 Years (Power Unit)

All references to HCPCS codes: Providers are responsible for determining the appropriate billing codes when submitting claims to the Medicare program, and should consult an attorney or other advisor to discuss specific situations in further detail.

INVACARE®  
**microAIR® MA65**  
SERIES THERAPEUTIC SUPPORT SURFACE



The **Invacare® microAIR® MA65 Therapeutic Support Surface** model improves air circulation and cools the body temperature with a unique system of air released into the mattress. The MA65 mattress is an alternating pressure with on demand low air loss mattress replacement system that aids in the prevention and treatment of stage I to IV pressure ulcers.

**Features**

**State of the art compressor** – With solenoid valve system allows for easy set up and effective therapy cycles  
 Four therapy times – Can be adjusted for patient comfort to provide pressure relief  
**Constant pressure monitoring**– Monitors the air pressure in the mattress to maintain the appropriate pressure to prevent capillary occlusion (generally below 32mm/Hg)

**Wireless Auto Fowler** – When activated, 25% more air is automatically pushed into the mattress to prevent patient from bottoming out when bed is articulated  
**Audio and visual alarms** – Warns the patient and caregiver during power outage or low pressure  
**Lock out button** – Prevents against tampering or accidental adjustments

**Power outage safety** – Mattress remains inflated during power outage as long as air hose is connected to the compressor  
**Cover** – Anti-microbial, fluid resistant, vapor permeable cover guards against friction and shear  
**Pressure adjustment** – Pressure can be adjusted by 50% to provide comfort for frail patients

**HCPCS Code: E0277**



**Invacare Corporation**  
 www.invacare.com

**USA**  
 One Invacare Way  
 Elyria, Ohio  
 44035-4190  
 (800) 333-6900

**Canada**  
 570 Matheson Blvd. E.,  
 Unit 8  
 Mississauga, Ontario  
 L4Z 4G4 Canada  
 (800) 668-5324

1. Raised side rails (optional on MA65)
2. Comfort levels based on patient weight with digital display
3. Wireless auto fowler helps to prevent from bottoming out

©2012  
 Invacare Corporation.  
 All rights reserved.  
 Trademarks are identified by the symbols ™ and ®. All trademarks are owned by or licensed to Invacare Corporation unless otherwise noted. Specifications are subject to change without notification.  
 Form No. 10-128  
 Rev. 03/12  
 111233

Model #	Dimensions	Weight Capacity	Compressor	Alternating Time Cycle	Alarms	Regulation Compliance	Limited Warranty
MA65, MA65RSR Raised side rail option	80" L 36" W 10" H	350 lb.	50 LPM	Adjustable	Audio and Visual	16 CFR 1632 16 CFR 1633	1 Year (Cover/Mattress) 2 Years (Power Unit)
MA65B42/ MA65B48	80" L 42"/48" W 10" H	1,000 lb.	50 LPM	Adjustable	Audio and Visual	16 CFR 1632 16 CFR 1633	1 Year (Cover/Mattress) 2 Years (Power Unit)



All references to HCPCS codes: Providers are responsible for determining the appropriate billing codes when submitting claims to the Medicare program, and should consult an attorney or other advisor to discuss specific situations in further detail.

INVACARE®  
**microAIR® MA50**  
SERIES THERAPEUTIC SUPPORT SURFACES



The **Invacare® microAIR® MA50 Therapeutic Support Surface** overlay is a full-featured alternating pressure overlay with four alternating pressure cycles to provide relief and comfort.

The **Invacare® microAIR® MA51 Therapeutic Support Surface** model is an alternating pressure mattress replacement system which helps reduce interface pressure to aid in the prevention and treatment of Stage I to IV pressure ulcers.

In addition to all of the features of the microAIR MA51 mattress, the **Invacare® microAIR® MA55 Therapeutic Support Surface** model improves air circulation and cools the body temperature with a unique system of low air loss released into the mattress.

**Features**

**State of the art compressor** – With solenoid valve system allows for easy set up and effective therapy cycles

Four therapy times – Can be adjusted for patient comfort to provide pressure relief

**Constant pressure monitoring** – Constantly monitors the air pressure in the mattress to maintain the appropriate pressure to prevent capillary occlusion (generally below 32mm/Hg)

**Manual Fowler** – When activated manually, 25% more air is automatically pushed into the mattress to prevent patient from bottoming out when bed is articulated

**Audio and visual alarms** – Warns the patient and caregiver during power outage or low pressure

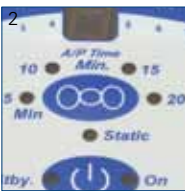
**Lock out button** – prevents against tampering or accidental adjustments

**Quick connect coupler** – allows for quick and easy set up

**Power outage safety** – Mattress remains inflated during power outage as long as air hose is connected to the compressor

**Pressure adjustment** – Pressure can be adjusted by 25%, 50% or 75% to provide comfort for frail patients

**HCPCS Code: E0372(MA50), E0277(MA51/MA55)**



**Invacare Corporation**  
www.invacare.com

**USA**  
One Invacare Way  
Elyria, Ohio  
44035-4190  
(800) 333-6900

**Canada**  
570 Matheson Blvd. E.,  
Unit 8  
Mississauga, Ontario  
L4Z 4G4 Canada  
(800) 668-5324

©2012  
Invacare Corporation.  
All rights reserved.  
Trademarks are identified by the symbols ™ and ®. All trademarks are owned by or licensed to Invacare Corporation unless otherwise noted. Specifications are subject to change without notification.  
Form No. 10-125  
Rev. 03/12  
111232



- 1. Easy to replace cells in case of damage
- 2. Choice of four therapy cycles
- 3. Dual layer quilted cover, denier nylon bottom



Model #	Dimensions	Weight Capacity	Compressor	Alternating Time Cycle	Alarms	Limited Warranty
MA50	80" L 36" W 6" H	350 lb.	10 LPM	Adjustable	Audio and Visual	1 Year (Cover/Mattress) 2 Years (Power Unit)
MA51	80" L 36" W 8" H	350 lb.	10 LPM	Adjustable	Audio and Visual	1 Year (Cover/Mattress) 2 Years (Power Unit)
MA55	80" L 36" W 8" H	350 lb.	10 LPM	Adjustable	Audio and Visual	1 Year (Cover/Mattress) 2 Years (Power Unit)

All references to HCPCS codes: Providers are responsible for determining the appropriate billing codes when submitting claims to the Medicare program, and should consult an attorney or other advisor to discuss specific situations in further detail.



INVACARE®  
**microAIR® MA65**  
SERIES THERAPEUTIC SUPPORT SURFACE



The **Invacare® microAIR® MA65 Therapeutic Support Surface** model improves air circulation and cools the body temperature with a unique system of air released into the mattress. The MA65 mattress is an alternating pressure with on demand low air loss mattress replacement system that aids in the prevention and treatment of stage I to IV pressure ulcers.

**Features**

**State of the art compressor** – With solenoid valve system allows for easy set up and effective therapy cycles

**Four therapy times** – Can be adjusted for patient comfort to provide pressure relief

**Constant pressure monitoring**– Monitors the air pressure in the mattress to maintain the appropriate pressure to prevent capillary occlusion (generally below 32mm/Hg)

**Wireless Auto Fowler** – When activated, 25% more air is automatically pushed into the mattress to prevent patient from bottoming out when bed is articulated

**Audio and visual alarms** – Warns the patient and caregiver during power outage or low pressure

**Lock out button** – Prevents against tampering or accidental adjustments

**Power outage safety** – Mattress remains inflated during power outage as long as air hose is connected to the compressor

**Cover** – Anti-microbial, fluid resistant, vapor permeable cover guards against friction and shear

**Pressure adjustment** – Pressure can be adjusted by 50% to provide comfort for frail patients

**HCPCS Code: E0277**



**Invacare Corporation**  
www.invacare.com

**USA**  
One Invacare Way  
Elyria, Ohio  
44035-4190  
(800) 333-6900

**Canada**  
570 Matheson Blvd. E.,  
Unit 8  
Mississauga, Ontario  
L4Z 4G4 Canada  
(800) 668-5324

©2012  
Invacare Corporation.  
All rights reserved.  
Trademarks are identified by the symbols ™ and ®. All trademarks are owned by or licensed to Invacare Corporation unless otherwise noted. Specifications are subject to change without notification.  
Form No. 10-128  
Rev. 03/12  
111233



1. Raised side rails (optional on MA65)
2. Comfort levels based on patient weight with digital display
3. Wireless auto fowler helps to prevent from bottoming out



Model #	Dimensions	Weight Capacity	Compressor	Alternating Time Cycle	Alarms	Regulation Compliance	Limited Warranty
MA65, MA65RSR Raised side rail option	80" L 36" W 10" H	350 lb.	50 LPM	Adjustable	Audio and Visual	16 CFR 1632 16 CFR 1633	1 Year (Cover/Mattress) 2 Years (Power Unit)
MA65B42/ MA65B48	80" L 42"/48" W 10" H	1,000 lb.	50 LPM	Adjustable	Audio and Visual	16 CFR 1632 16 CFR 1633	1 Year (Cover/Mattress) 2 Years (Power Unit)

All references to HCPCS codes: Providers are responsible for determining the appropriate billing codes when submitting claims to the Medicare program, and should consult an attorney or other advisor to discuss specific situations in further detail.

INVACARE®  
**microAIR® MA80**  
SERIES THERAPEUTIC SUPPORT SURFACE



The **Invacare® microAIR® MA80 Therapeutic Support Surface** model is a true low air loss mattress that is ideal for situations where maceration and moisture management are an issue. The MA80 mattress helps manage skin moisture to avoid maceration and maintain a dryer environment for pressure ulcer healing in the treatment of Stage I to IV pressure ulcers.

The **Invacare® microAIR® MA85 Therapeutic Support Surface** model builds on the true low air loss model benefits, while increasing the therapy with the addition of alternating pressure to reduce surface interface and offer pressure relief.

**Features**

**Blower** – Provides greater air output, quick set up and more efficient therapy cycles

**Wireless auto fowler** – When the transmitter in the head section is raised, 25% more air is added into the center section of the bed, preventing the patient from bottoming out

**Audio and visual alarms** – Warn patient and caregiver of low pressure and power outage

**Lock out button** – Prevents against tampering or accidental adjustments  
 Power outage safety – Returns to pre-power outage settings

**Cover** – Dual layer quilted cover, anti-microbial, fluid-proof, vapor permeable, guards against friction and denier nylon bottom shear

**Settings** – Based on patient weight to ensure correct pressure

**Constant pressure monitoring** – Efficient real time monitoring for correct pressure relief

**Five pressure zones** – Maintained automatically for softer head and heel sections and firmer torso pressure interfaces

**Pulse setting** – Available on MA80

**HCPCS Code: E0277**



- 1. Interchangeable air cells
- 2. Audio and visual alarms
- 3. Stretch cover, denier nylon bottom



**Invacare Corporation**  
 www.invacare.com

**USA**  
 One Invacare Way  
 Elyria, Ohio  
 44035-4190  
 (800) 333-6900

**Canada**  
 570 Matheson Blvd. E.,  
 Unit 8  
 Mississauga, Ontario  
 L4Z 4G4 Canada  
 (800) 668-5324

©2012  
 Invacare Corporation.  
 All rights reserved.  
 Trademarks are identified by the symbols ™ and ®. All trademarks are owned by or licensed to Invacare Corporation unless otherwise noted. Specifications are subject to change without notification.  
 Form No. 10-130  
 Rev. 03/12  
 111234



Model #	Dimensions	Weight Capacity	Blower	Alarms	Regulation Compliance	Limited Warranty
MA80	80" L 36" W 10" H	350 lb.	1275 LPM	Audio and Visual	16 CFR 1632 16 CFR 1633	1 Year (Cover/Mattress) 2 Years (Power Unit)
MA80B42/ MA8048	80" L 42"/48" W 10" H	1,000 lb.	1275 LPM	Audio and Visual	16 CFR 1632 16 CFR 1633	1 Year (Cover/Mattress) 2 Years (Power Unit)
MA85, MA85RSR Raised side rail option	80" L 36" W 10" H	350 lb.	1275 LPM	Audio and Visual	16 CFR 1632 16 CFR 1633	1 Year (Cover/Mattress) 2 Years (Power Unit)
MA85B42/ MA85B48	80" L 42"/48" W 10" H	1,000 lb.	1275 LPM	Audio and Visual	16 CFR 1632 16 CFR 1633	1 Year (Cover/Mattress) 2 Years (Power Unit)

All references to HCPCS codes: Providers are responsible for determining the appropriate billing codes when submitting claims to the Medicare program, and should consult an attorney or other advisor to discuss specific situations in further detail.

INVACARE®  
**microAIR® MA90**  
SERIES THERAPEUTIC SUPPORT SURFACE



The **Invacare® microAIR® MA90Z Therapeutic Support Surface** model is an advanced mattress enhanced with patented features to create the ultimate patient comfort and relief. Using a compressor system, the MA90Z mattress offers alternating lateral rotation and on demand low air loss to help provide pressure relief and moisture management for up to stage IV pressure ulcers.

The **Invacare® microAIR® MA95Z Therapeutic Support Surface** model allows customization for degrees of turn, time and pressure. Static and pulse therapies are available in addition to the alternating lateral rotation and continuous true low air loss. Added to the MA90Z and MA95Z are enhanced protective measures such as side bolsters and recentering of the patient in between turns. The MA95Z aids in the prevention and treatment of stage I to IV pressure ulcers.

**Features**

**MA90Z Compressor** – State of the art compressor allows for easy set up and effective therapy cycles

**MA90Z Blower** – Powerful blower provides greater air output, quick set up and more efficient therapy cycles

**Constant pressure monitoring** – Solenoid valves open and close to regulate the air inside the mattress and maintain the pressure at or below 32mm/Hg to avoid capillary occlusion

**Wireless auto fowler** – When the transmitter in the head section is raised, 25% more air is automatically added into the mattress, helping prevent the patient from bottoming out

**Power outage safety** – Compressor model (MA95Z) remains inflated through power outage

**Turn times** – MA90Z includes times of 10, 20, 30 and 60 minutes with option to turn right or left only. MA95Z includes customizable turn times

**Rotation angles** – MA90Z includes ¼, ½ and ¾ turn options. MA95Z features customizable turn angles

**Z-Cell** – Patented design creates a more comfortable and subtle turn

**HCPCS Code: E0277**



- 1. 24 air cells and built-in raised side bolsters
- 2. Audio and visual alarms with lock out
- 3. Urethane four way stretch quilted cover, denier nylon bottom



**Invacare Corporation**  
www.invacare.com

**USA**  
One Invacare Way  
Elyria, Ohio  
44035-4190  
(800) 333-6900

**Canada**  
570 Matheson Blvd. E.,  
Unit 8  
Mississauga, Ontario  
L4Z 4G4 Canada  
(800) 668-5324

©2012  
Invacare Corporation.  
All rights reserved.  
Trademarks are identified by the symbols ™ and ®. All trademarks are owned by or licensed to Invacare Corporation unless otherwise noted. Specifications are subject to change without notification.  
Form No. 10-132  
Rev. 03/12  
111235



Model #	Dimensions	Weight Capacity	Compressor	Blower	Alarms	Regulation	Limited Warranty
MA90Z	80" L 36" W 10" H	350 lb.	50 LPM	N/A	Audio and Visual	16 CFR 1632 16 CFR 1633	1 Year(Cover/ Mattress) 2 Years (Power Unit)
MA90ZB42/ MA90ZB48	80" L 42"/48" W 10" H	1,000 lb.	50 LPM	N/A	Audio and Visual	16 CFR 1632 16 CFR 1633	1 Year(Cover/ Mattress) 2 Years (Power Unit)
MA95Z	80" L 36" W 10" H	350 lb.	N/A	1275 LPM	Audio and Visual	16 CFR 1632 16 CFR 1633	1 Year(Cover/ Mattress) 2 Years (Power Unit)
MA95ZB42/ MA95ZB48	80" L 42"/48" W 10" H	1,000 lb.	50 LPM	N/A	Audio and Visual	16 CFR 1632 16 CFR 1633	1 Year(Cover/ Mattress) 2 Years (Power Unit)

All references to HCPCS codes: Providers are responsible for determining the appropriate billing codes when submitting claims to the Medicare program, and should consult an attorney or other advisor to discuss specific situations in further detail.

INVACARE®  
**SOFTFORM**  
THERAPEUTIC SUPPORT SURFACES

---



---

**Invacare® Softform Mattresses** utilize superior materials inside and out for comfortable, durable mattresses which were designed to aid in prevention of pressure ulcers in patients up to Very High Risk, making them a highly versatile prevention surface. From high-resiliency 2.5 lb. castellated polyurethane to premium four-way stretch covers, Softform mattresses are more comfortable and will retain their supportive qualities longer than typical foam mattresses.

---

---

## Invacare® Softform Therapeutic Support Surfaces



**Designed using superior materials from top to bottom to aid in pressure ulcer prevention**

**Higher density foam delivers a higher degree of prevention and performance**

Softform Mattresses utilize 2.5 lb. high-resiliency (HR) foam, which means they will maintain their shape, comfort and pressure-reduction qualities longer than foams of lower density. HR foam contours to the patient exceptionally well, and when combined with the castellated design of the Softform Mattress, provides necessary pressure relief without sacrificing comfort.



The **fluid-resistant, four-way stretch Softform Mattress cover** is designed to help reduce shear and friction forces, which can be contributing factors in the development of pressure ulcers as well as make the skin tissue more vulnerable to the forces of direct pressure.



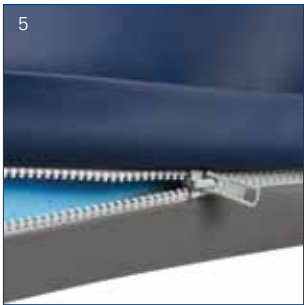
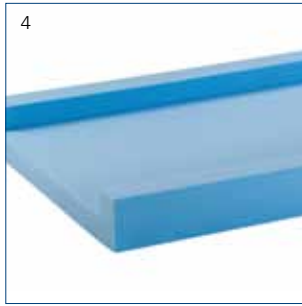
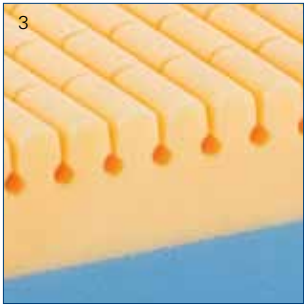
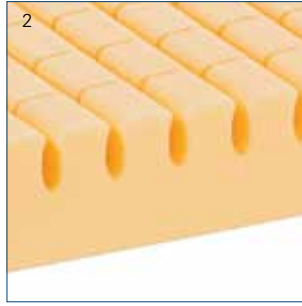
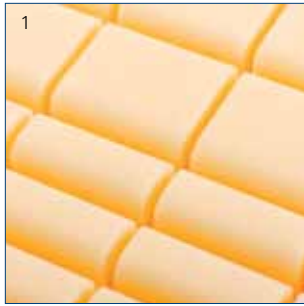
The **Invacare® Softform Premier™ Mattress** features a unique contoured foam insert which provides excellent patient comfort and optimizes pressure reduction for patients up to **Very High Risk**. A single piece foam U-core provides side support and helps facilitate resident transfers.



The **Invacare® Softform Excel™ Mattress** has a contoured foam layer which is designed to evenly distribute the weight of a patient, promote greater comfort and facilitate pressure ulcer prevention in patients up to **High Risk**. The base of the mattress features a firm foam layer to provide substantial support.

---





### Castellations

1. Unique castellated cells break the surface tensions of the foam, allowing the patient to be immersed into the foam, maximizing body contact area and optimizing pressure reduction.
2. The Softform Premier mattress features premium HR foam cut into mushroom-shaped cells to allow superior patient immersion and pressure redistribution.
3. The Softform Excel mattress features a unique keyhole cut to ensure proper airflow through the foam to maintain a consistent temperature while moving with the patient for improved comfort.

### Single-piece U Core

4. The Softform Premier mattress features a single piece foam "U" core which facilitates patient transfer by providing effective side-wall support. Manufacturing the core out of one piece of foam vs. glued sections results in a strong, durable mattress.
5. Softform mattress covers feature a concealed zipper, reducing possible risk of fluid ingress (full flap on Softform Premier mattress cover shown).
6. Fully removable covers allow for easy replacement, laundering and inspection of foam.

### Premium fluid-resistant cover

7. Softform mattress covers are four-way stretch polyurethane and feature a tough coated polyurethane base to extend the longevity of the mattress. The Softform Premier mattress features high frequency welded seams; the Softform Excel Mattress features stitched seams. (Softform Premier mattress cover shown).

### Raised Side Rail (RSR) covers available separately

8. Customize Softform mattresses with RSR covers as needed for patients requiring additional side support. Widths up to 48" available.

### There are important clinical and cost advantages associated with the use of the Softform Mattress.

As an integral part of your support surface formulary, the Invacare Softform Mattresses will deliver essential clinical and financial benefits. In two published, randomized clinical studies, the use of the Softform Mattress in place of traditional mattress systems reduced pressure ulcer incidence in high risk patient populations from 34% to 7% and pressure ulcer prevalence from 30% to 9% respectively.<sup>1,2</sup>

In subsequent work, Gray and colleagues examined the long term performance of the Softform and concluded there was no deterioration of the mattress performance over three years.<sup>3</sup> Additionally, James concluded a standardized, static led mattress approach using the Softform mattress improved patient care, produced a significant savings and reduced dynamic mattress rental costs over a three year period.<sup>2</sup>

1. Gray D, Campbell M. A Randomized Clinical Trial of Two Types of Foam Mattresses. *Journal of Tissue Viability* 1994;4(4): 128-132

2. James J. A Static-led Approach to Pressure Ulcers: an Evaluation After 3 Years. *British Journal of Nursing* 2004;13(20): 1221-1225

3. Gray D, Cooper P, Campbell M. A Study of the Performance of a Pressure Reducing Foam Mattress After Three Years of Use. *Journal of Tissue Viability* 1998;8(3): 9-13

	<b>Invacare® Softform Excel™ Mattress</b>	<b>Invacare® Softform Premier™ Mattress</b>
<b>Patient Risk Level</b>	Low-High	Low-Very High
<b>Construction</b>	2 layer HR Foam	U Core with removeable HR Foam Insert
<b>Foam Cut</b>	Keyhole Cut	Mushroom Cell
<b>Built-in Side Support</b>	No	Yes
<b>Cover</b>	4 way stretch with Stitched Seams	4 way stretch with High Frequency Welded Seams
<b>Infection Control</b>	3/4 Flap to conceal Zipper	Full flap to conceal Zipper
<b>Capacity</b>	450 lb.	500 lb. (650 lb. bariatric models available)
<b>Warranty</b>	6 Years Foam, 2 Years Cover	8 Years Foam, 4 Years Cover



Model #	Dimensions	Weight Capacity	Regulation Compliance	Limited Warranty
<b>Invacare® Softform Premier™ Mattress</b>				
IPM1076	76"L 36"W 6"H	500lb.	TB 129, 16 CFR 1632 16 CFR 1633	8 Years Foam 4 Years Foam
IPM1080	80"L 36"W 6"H	500lb.	TB 129, 16 CFR 1632 16 CFR 1633	8 Years Foam 4 Years Foam
IPM1084	84"L 36"W 6"H	500lb.	TB 129, 16 CFR 1632 16 CFR 1633	8 Years Foam 4 Years Foam
IPM1080B39	80"L 39"W 6"H	650lb.	TB 129, 16 CFR 1632 16 CFR 1633	8 Years Foam 4 Years Cover
IPM1080B42	80"L 42"W 6"H	650lb.	TB 129, 16 CFR 1632 16 CFR 1633	8 Years Foam 4 Years Cover
IPM1080B48	80"L 48"W 6"H	650lb.	TB 129, 16 CFR 1632 16 CFR 1633	8 Years Foam 4 Years Cover
<b>Invacare® Softform Excel™ Mattress</b>				
IXL1076	76"L 36"W 6"H	450 lb.	TB 129, 16 CFR 1632 16 CFR 1633	6 Years Foam 2 Years Cover
IXL1080	80"L 36"W 6"H	450 lb.	TB 129, 16 CFR 1632 16 CFR 1633	6 Years Foam 2 Years Cover
IXL1084	84"L 36"W 6"H	450 lb.	TB 129, 16 CFR 1632 16 CFR 1633	6 Years Foam 2 Years Cover
<b>Invacare® Softform Mattress 3" Raised Side Rail Covers</b>				
RSR36	80"L 36"W 3"H	N/A	TB 129, 16 CFR 1632 16 CFR 1633	2 Years Cover
RSR42	80"L 42"W 3"H	N/A	TB 129, 16 CFR 1632 16 CFR 1633	2 Years Cover
RSR48	80"L 48"W 3"H	N/A	TB 129, 16 CFR 1632 16 CFR 1633	2 Years Cover
RSR84	84"L 36" W 3"H	N/A	TB 129, 16 CFR 1632 16 CFR 1633	2 Years Cover

**Invacare Corporation**  
www.invacare.com

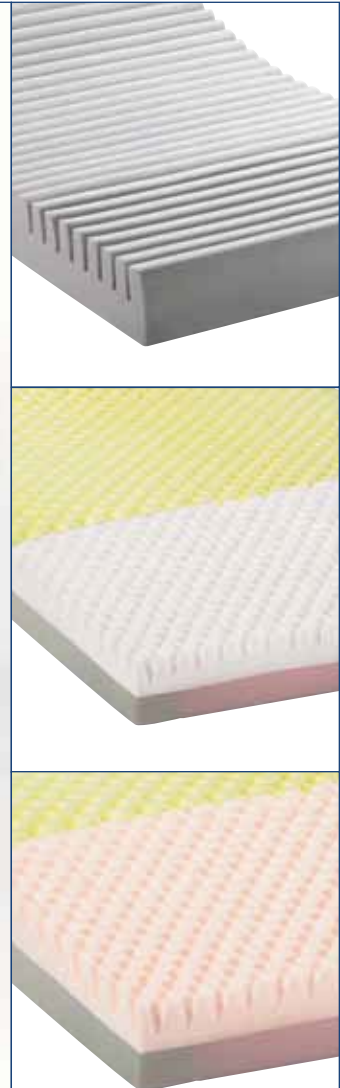
**USA**  
One Invacare Way  
Elyria, Ohio  
44035-4190  
(800) 333-6900

**Canada**  
570 Matheson Blvd. E.,  
Unit 8  
Mississauga, Ontario  
L4Z 4G4 Canada  
(800) 668-5324

©2014  
Invacare Corporation.  
All rights reserved.  
Trademarks are  
identified by the  
symbols ™ and ®.  
All trademarks are  
owned by or licensed  
to Invacare Corporation  
unless otherwise  
noted. Specifications  
are subject to change  
without notification.  
Form No. 13-697  
131232



INVACARE®  
**SOLACE® PREVENTION**  
THERAPEUTIC SUPPORT SURFACES



The **Invacare® Solace® Prevention Series Mattresses** are unique single and dual-layered foam mattress replacements that are designed to help minimize the risk of pressure ulcers by distributing the weight as uniformly as possible and allowing blood to flow through the capillaries in areas prone to lesion development. The Prevention Series offers four mattresses, each increasing in treatment efficacy as you move up the line. The unique and patented designs combine comfort and technology for patient and caregiver confidence.

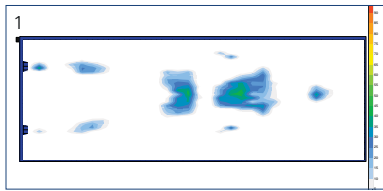
**Invacare® Solace® Prevention 1080 Mattress**

A zoned top layer relieves pressure in the important susceptible body zones. The convoluted “fortress” cut design offers more surface area for patient support and relief. Two layers of high quality foam include softer head and heel sections. Available in 80" standard length.

**Features**

- 70 Denier nylon top
- 11 oz. tri-laminate vinyl bottom
- Fluid resistant
- Raised side rail design available
- Compliant with federal fire regulations

**HCPCS Code: E0184**



1. Test shows subject in supine position demonstrating contact measurement between key pressure points using FSA pressure mapping technology. Subject: Female, 5'2", 105 lb.



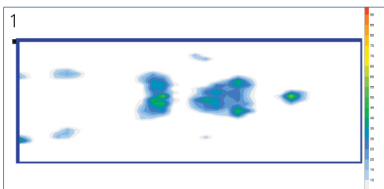
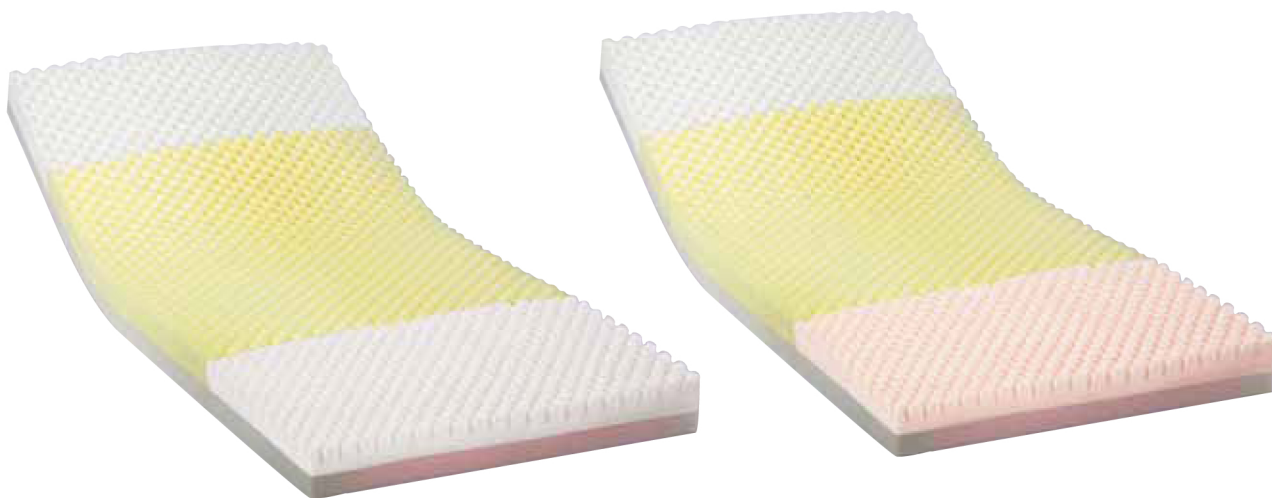
Model #	Dimensions	Weight Capacity	Regulation Compliance	Limited Warranty
SPS1080	80" L 36" W 6" H	350 lb.	16 CFR 1632 16 CFR 1633	5 Years (Mattress) 1 Year (Cover)

**Invacare® Solace® Prevention 3080  
Mattress**

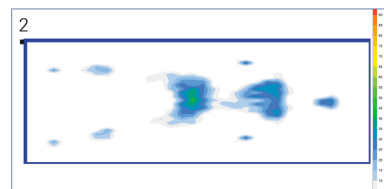
The soft heel section is upgraded to visco-elastic foam to cradle the sensitive area. This product provides comfort and support with built-in side supports and dual layer “fortress” cut foam.

**Features**

- Built-in side supports
- 70 Denier nylon top cover
- 11 oz. tri-laminate vinyl bottom
- Soft head and heel section
- Fortress cut convoluted foam



1. Test shows subject in supine position demonstrating contact measurement between key pressure points using FSA pressure mapping technology. Subject: Female, 5'2", 105 lb.



2. Test shows subject in supine position demonstrating contact measurement between key pressure points using FSA pressure mapping technology. Subject: Female, 5'2", 105 lb.

**Invacare Canada LP**  
www.invacare.ca

570 Matheson Blvd. E.,  
Unit 8  
Mississauga, Ontario  
L4Z 4G4 Canada  
(800) 668-5324  
16773, boulevard Hymus

Kirkland, Quebec  
H9H 3L4  
(800) 363-0137

©2015  
Invacare Corporation.  
All rights reserved.  
Trademarks are identified  
by the symbols™ and®.  
All trademarks are owned  
by or licensed to Invacare  
Corporation unless  
otherwise noted.  
Specifications are subject  
to change without notice.

Form No. 15-922C



Model #	Dimensions	Weight Capacity	Regulation Compliance	Limited Warranty
SPS3080	80" L 36" W 6" H	350 lb.	16 CFR 1632 16 CFR 1633	5 Years (Mattress) 1 Year (Cover)

